

ME01-ME04

ME 气动型扭矩限制器

TYPE ME Pneumatic type TORQUE LIMITER

ME 轴-法兰连接

Shaft-to-ring connection



ME 气动型扭矩限制器参数表 Parameter of ME Pneumatic type Torque Limiter

型号 TYPE	扭矩 TORQUE (NM) 气压起点为 1Bar-6Bar	最大 气压 Bar	H 行程 距离	N 气管 型号	R 止动 杆	重量 KG
ME01	15-58	6	1.2	1/8 gas	6	1.7
ME02	30-179	6	2	1/8 gas	6	3.1
ME03	30-235	6	2.3	1/8 gas	8	5.2
ME04	85-550	6	3	1/8 gas	10	8.5

Features :

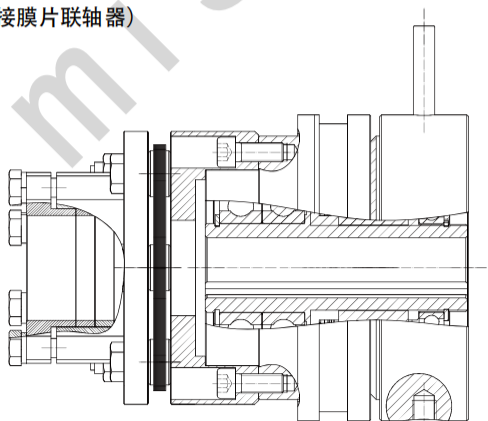
- ① : High level of automation, no human intervention required
- ② : Customizable reset angle; standard is 360 degrees (return to origin).
- ③ : Completely disengages after overload with zero residual torque.
- ④ : Maintenance-free installation.
- ⑤ : Suitable for applications such as filling, packing, dispensing, lifting, and other automated equipment.

ME 气动型扭矩限制器主要尺寸 Dimension of ME Pneumatic type Torque Limiter

Dimensions in mm 尺寸 : (mm)

型号 TYPE	Φ A MAX	Φ B	Φ C h7	Φ D	Φ E	Φ F	Φ G	I	L	M	P	Q	S	T	U	V	Z	M
ME01	18	25	55	65	74	81	86	6XM5	72	27	9	15	8	9	6	30	12.5	27
ME02	25	35	70	82	95	102	108	6XM5	87	34	10	20	8	9	7	40	17	34
ME03	30	45	85	100	115	122	129	6XM6	102	36	15	25	10	9	8	50	17	36
ME04	42	55	105	120	135	145	152	6XM8	119	44.5	20	25	15	9	10	60	19	44.5

MEL (后接膜片联轴器)



◇ MEL Features :

- ① Designed for shaft-to-shaft connection
- ② Customizable reset angle; standard is 360 degrees (return to origin).
- ③ Completely disengages after overload with zero residual torque
- ④ Maintenance-free installation.
- ⑤ 3D models available for convenient design integration.
- ⑥ Compatible with various types of couplings to meet different operational requirements

订货描述 :
Order form:

规格型号 Size Type	孔径 Finish bore(H7)	(A型键槽, 宽度5) Key Way
ME01	Y15	A5

MET 气动型扭矩限制器

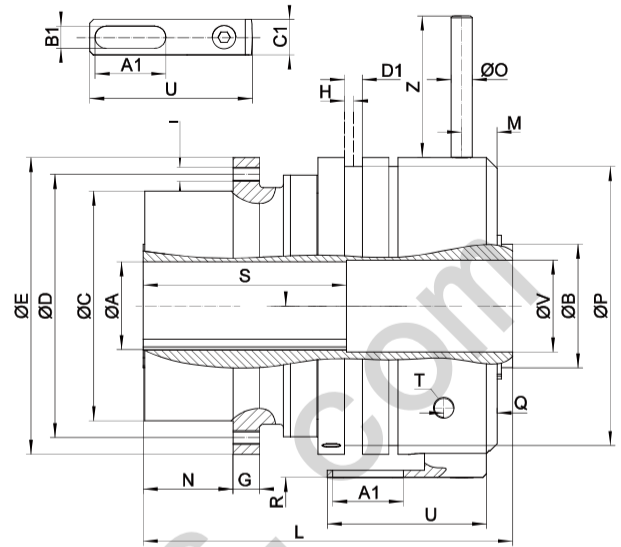
TYPE MET Pneumatic type TORQUE LIMITER

MET 轴-法兰连接

Shaft-to-ring connection



MET01-MET06



Same features as the ME model, but capable of handling higher torque.

MET 气动型扭矩限制器参数表 Parameter of MET Pneumatic type Torque Limiter

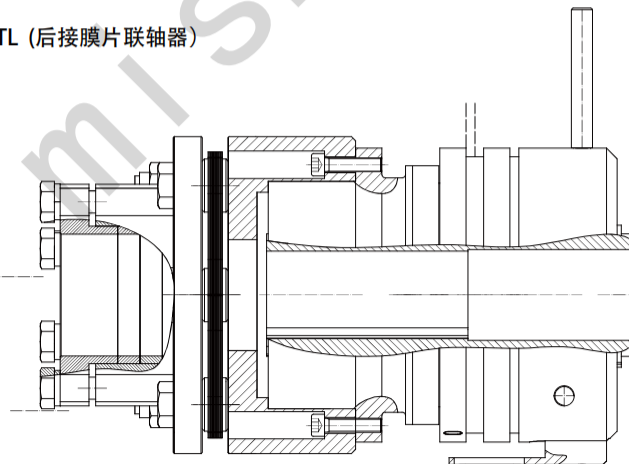
型号 TYPE	扭矩 TORQUE (NM) 气压起点为 1Bar-6Bar	最大气压 Bar	H 行程距离	N 气管型号	O 止动杆	重量 KG	B1 限位开关直径	C1 开关支撑架	A1
MET01	15-58	6	1.2	1/8 gas	6	2.2	M8	12	25
MET02	30-132	6	2	1/8 gas	6	4.6	M8	15	30
MET03	45-200	6	2.3	1/8 gas	8	7.4	M8	15	30
MET04	85-450	6	3	1/8 gas	10	9	M8	15	35
MET05	200-1400	6	3	1/4 gas	12	17	M12	20	40
MET06	550-2250	6	3	1/4 gas	12	33	M12	20	50

MET 气动型扭矩限制器主要尺寸 Dimension of MET Pneumatic type Torque Limiter

Dimensions in mm 尺寸：(mm)

型号 TYPE	φ A MAX	φ B	φ C h7	φ D	φ E	φ F 4X90°	φ G	I	L	M	N	P	Q	R	S	U	V	Z
MET01	19	25	55	65	74	58	8	6XM5	103	8	17	65	12	44.5	45	50	19.5	30
MET02	25	35	70	82	95	78	8	6XM5	125	8	25	88	12	57.5	60	65	26	40
MET03	30	45	85	100	115	92	9	6XM6	140	11	31	107	14	67	70	65	36	50
MET04	42	55	105	120	135	108	12	6XM8	167	16	36	127	18	77	100	75	45	60
MET04	50	70	130	150	168	135	15	6XM10	209	20	51	158	24	97	115	90	52	80
MET04	65	90	165	190	216	172	18	6XM12	247	20	67	206	30	121	145	105	68	80

METL (后接膜片联轴器)



METL Features:

Same characteristics as the ME series, but capable of handling higher torque. 3D drawings are available.

**订货描述：
Order form:**

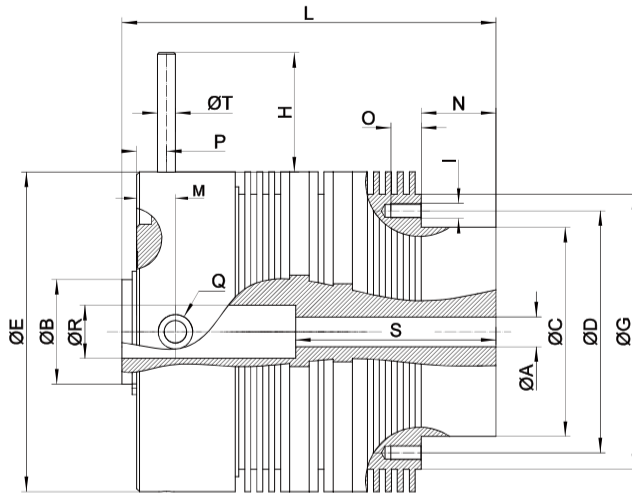
规格型号 Size Type	孔径 Finish bore(H7)	(A型键槽, 宽度5) Key Way	限位开关(选配)
MET01	Y15	A5	M8

MEF 气动型摩擦扭矩限制器

TYPE MET Pneumatic friction type TORQUE LIMITER

MEF 轴-法兰连接

Shaft-to-ring connection



MEF01-MEF03

MEF 气动摩擦式扭矩限制器参数表 Parameter of MEF Pneumatic friction type Torque Limiter

型号 TYPE	扭矩 TORQUE (NM) 气压起点为 1Bar-6Bar	最大气压 Bar	Q 气管型号	φ T 止动杆	重量 KG
MEF01	5-33	6	1/8 gas	6	4.5
MEF02	13-80	6	1/8 gas	8	6.5
MEF03	25-140	6	1/8 gas	10	13

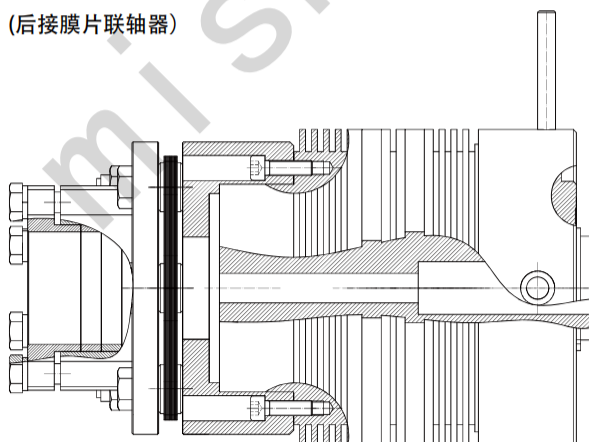
Contact Mishkin for 3D and 2D drawings

more details, please contact Mishkin www.mishkinparts.com

MEF 气动摩擦式扭矩限制器主要尺寸 Dimension of MET Pneumatic friction type Torque Limiter Dimensions in mm 尺寸：(mm)

型号 TYPE	φ A MAX	φ B	φ C h7	φ D	φ E	φ G	I	L	H	M	N	P	R	O	S
MEF01	25	35	70	82	107	92	6XM5	125	40	13	25	10	26	10	60
MEF02	30	45	85	100	130	114	6XM6	140	50	16	31	13	36	12	70
MEF03	42	55	105	120	169	132	6XM8	167	60	20	36	17	45	15	100

MEFL (后接膜片联轴器)



Features:

- High level of automation, no human intervention required.
- No angular positioning; can engage and transmit torque at any time.
- Completely disengages after overload with zero residual torque.
- Maintenance-free installation.
- Suitable for applications such as filling, packaging, dispensing, lifting, and other automated equipment.
- 3D models available. For more details, please contact Mishkin mishkinparts.com

订货描述：
Order form:

规格型号 Size Type	孔径 Finish bore (H7)	(A型键槽, 宽度5) Key Way
MEF01	Y15	A5