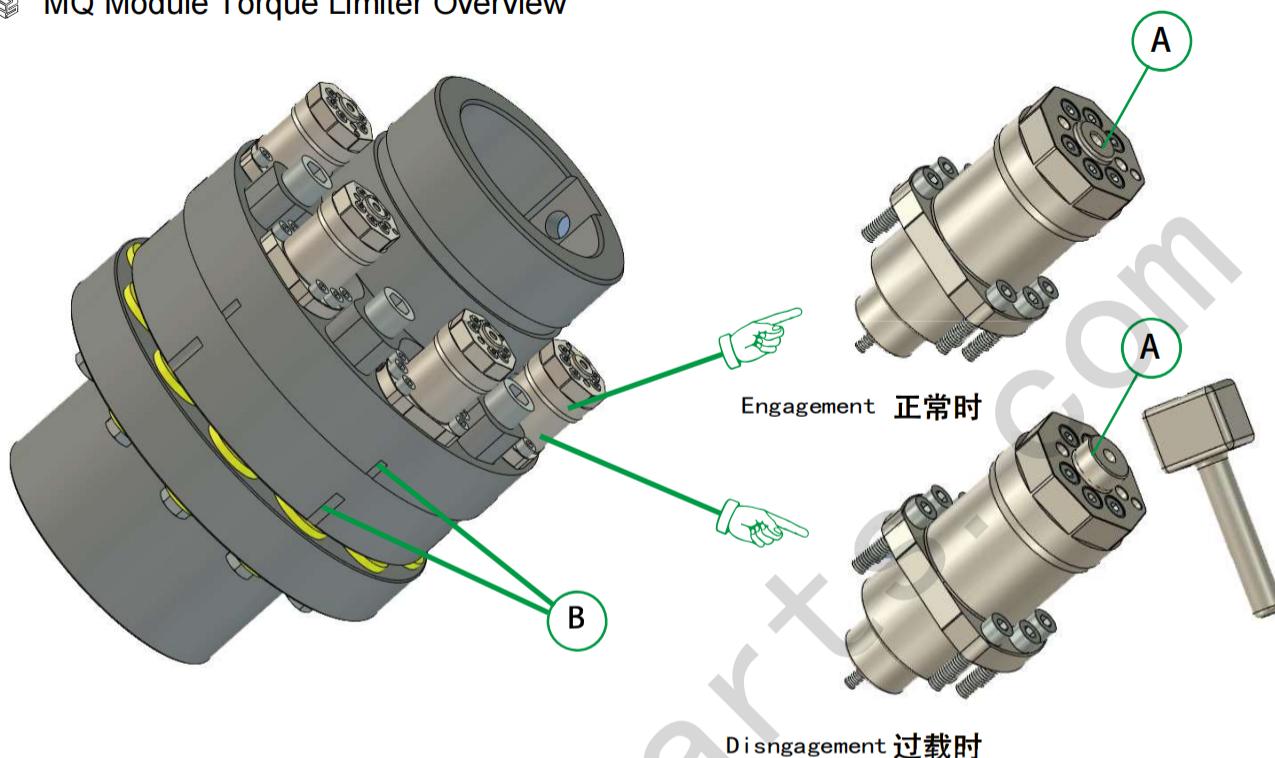


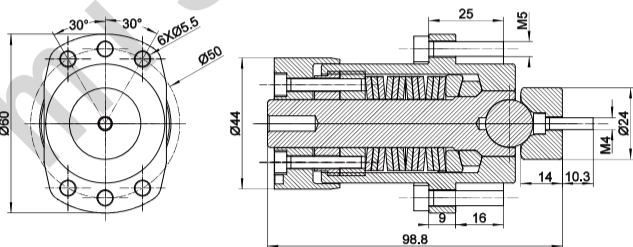
## MQ Module Torque Limiter Overview



### 文字说明:

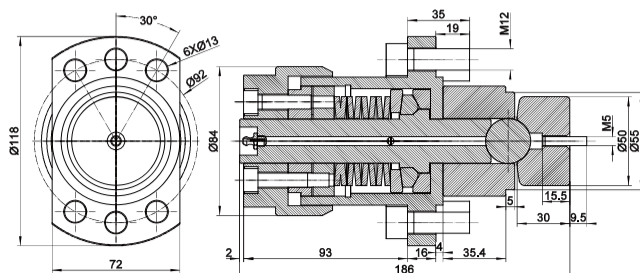
注意观察A点，当限制器正常传递扭矩时，A点突出六角螺母平面为2毫米左右，当扭矩超过设定值时，A点突出距离为6毫米左右，此时重新对准B凹槽位置用外力敲击，或者其他方式，使得模组新回归正常时，即可再次启动设备。

Pay attention to point A, when the limiter normally transmits torque, point A protruding hexagonal nut plane is about 2mm, when the torque exceeds the set value, the protruding distance of point A is about 6 mm. At this time, re-align the position of groove B and knock with external force. Or by other means, when the module is newly returned to normal, you can start the device again



### ST1 Lightweight Module

- Designed for use in lightweight equipment.
- Capable of installing up to 12 units simultaneously
- Torque capacity up to 42,400 N·m.
- Commonly used in extrusion equipment
- Available for individual sale




### ST2 Heavy-Duty Module

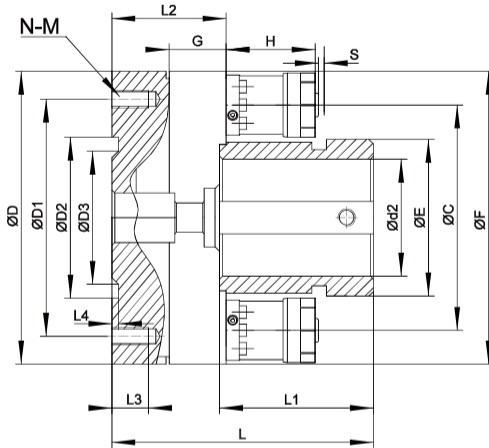
- Designed for use in heavy-duty equipment.
- Capable of installing up to 16 units simultaneously
- Torque capacity up to 400,000 N·m
- Commonly used in metallurgy and mining industries. Available for individual sale.


MQ 扭矩限制器 

TYPE MQ BALL TORQUE LIMITER


MQ 轴-法兰连接 

shaft to-ring connection




 MQ 型键槽式扭矩限制器参数表 Parameter of MQ Torque Limiter

TYPE	RPM	Disc Spring Arrangement	模组数量扭矩范围					
			2模组	3模组	4模组	6模组	9模组	12模组
MQ200	3000	S	670-1950	—	1350-3900	—	—	—
		M	960-2200	—	2000-5800	—	—	—
MQ226	2700	S	720-2300	—	2700-7800	—	—	—
		M	1100-3500	—	3800-8800	—	—	—
MQ242	2300	S	—	640-1850	—	2800-3700	—	—
		M	—	1850-5500	—	3850-10500	—	—
MQ260	2000	S	—	880-2380	—	1690-4760	—	—
		M	—	1080-6650	—	2080-13000	—	—
MQ280	1700	S	—	970-3100	—	2200-6300	—	—
		M	—	2200-6500	—	4400-12100	—	—
MQ312	1500	S	—	980-2600	—	2000-5200	2400-10800	—
		M	—	2600-7550	—	5300-15200	7900-22700	—
MQ420	1200	S	—	1200-3550	—	2400-7900	—	—
		M	—	3550-10600	—	7350-21200	11000-31800	14700-42400

 MQ 型键槽式扭矩限制器主要尺寸 Dimension of MQ Torque Limiter

型号	Φ D	Φ D1	D2	D3	Φ d2 MAX	Φ E	Φ C	Φ F	L	L1	L2	L3	L4	N-M	G	H	S
MQ200	200	154	110	97	90	107	154	200	178.5	105	78	25	3	10-M12	39	63	4
MQ226	226	176	140	120	100	135	178	226	179.5	105	78	25	3	12-M12	30	63	4
MQ242	242	190	140	115	120	165	196	242	202.5	119	85.5	25	3	12-M12	40	63	4
MQ260	260	201	170	138	130	168	210	260	216	126	92	25	6	12-M16	40	63	4
MQ280	280	212	170	138	140	188	230	280	226	136	92	25	6	12-M16	40	63	4
MQ312	312	250	195	160	150	195	264	312	246	156	92	30	6	12-M16	45	63	4
MQ420	420	334	220	188	200	272	372	420	292	188	104	30	6	12-M20	50	63	4

 订货描述：  
Order form:

订货描述: 例如 MQ200-L-2-YA50-1500N.M+RS16A-2-30Z (选装12双排链轮)					
型号	排列形式	模组数量	d1	设定扭矩	其他附件 (例如, 皮带轮, 齿轮, 链轮, 同步轮等等, 均可咨询米什金)
MQ200	S	2	YA50	1500N.M	www.mishkinparts.com



### Functional Features

Wide torque range, suitable for various models.  
 Manual reset with easy disassembly.  
 No special tools required; virtually maintenance-free.  
 Standard design allows for connection to gears, sprockets, pulleys, etc.  
 Unless otherwise specified, hole tolerances are machined to H7 standards.  
 Unless otherwise specified, keyway tolerances are machined to JS9 standards.  
 Optional pulse signal point.  
 Optional overload signal disc.



### Functional Features

Wide torque range, suitable for various models.  
 Manual reset with easy disassembly.  
 No special tools required; virtually maintenance-free.  
 Can be equipped with a signal disc for proximity switch installation  
 Unless otherwise specified, hole tolerances are machined to H7 standards.  
 Unless otherwise specified, keyway tolerances are machined to JS9 standards.  
 Optional pulse signal point.  
 Optional overload signal disc.




### Functional Features

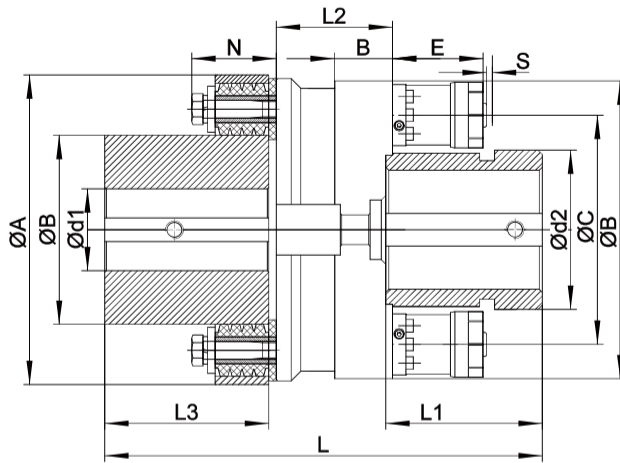
Wide torque range, suitable for various models.  
 Manual reset with easy disassembly.  
 No special tools required; virtually maintenance-free.  
 Equipped with a signal disc for proximity switch installation.  
 Can be fitted with a dual-row sprocket.  
 For more configurations, please contact Mishkin.  
 Website: [www.mishkinparts.com](http://www.mishkinparts.com)


MQL 扭矩限制器 

TYPE MQL BALL TORQUE LIMITER


MQL 轴-轴连接 

shaft to-shaft connection




 MQL型键槽式扭矩限制器参数表 Parameter of MQL Torque Limiter


型号 TYPE	最高转速 RPM	碟簧排列 形式	模组数量扭矩范围					
			2模组	3模组	4模组	6模组	9模组	12模组
MQL 200	3000	S	670-1950	—	1350-3900	—	—	—
		M	960-2200	—	2000-5800	—	—	—
MQL 226	2700	S	720-2300	—	2700-7800	—	—	—
		M	1100-3500	—	3800-8800	—	—	—
MQL 242	2300	S	—	640-1850	—	2800-3700	—	—
		M	—	1850-5500	—	3850-10500	—	—
MQL 260	2000	S	—	880-2380	—	1690-4760	—	—
		M	—	1080-6650	—	2080-13000	—	—
MQL 280	1700	S	—	970-3100	—	2200-6300	—	—
		M	—	2200-6500	—	4400-12100	—	—
MQL 312	1500	S	—	980-2600	—	2000-5200	2400-10800	—
		M	—	2600-7550	—	5300-15200	7900-22700	—
MQL 420	1200	S	—	1200-3550	—	2400-7900	—	—
		M	—	3550-10600	—	7350-21200	11000-31800	14700-42400

 MQL 型键槽式扭矩限制器主要尺寸 Dimension of MQL Torque Limiter

型号	ΦA	ΦB	Φd1 MAX	Φd2 MAX	ΦE	ΦC	ΦF	L	L1	L2	L3	N	G	H	S
MQL200	200	127	100	90	107	154	200	293.5	105	78	110	63	39	63	4
MQL226	226	140	110	100	135	178	226	304.5	105	78	120	63	30	63	4
MQL242	242	154	120	120	165	196	242	337.5	119	85.5	130	63	40	63	4
MQL260	260	169	130	130	168	210	260	351	126	92	130	63	40	63	4
MQL280	280	189	140	140	188	230	280	373	136	92	140	83	40	63	4
MQL312	312	195	150	150	195	264	312	394	156	92	140	83	45	63	4
MQL420	420	272	200	200	272	372	420	550	188	104	250	103	50	63	4

 订货描述：  
Order form:

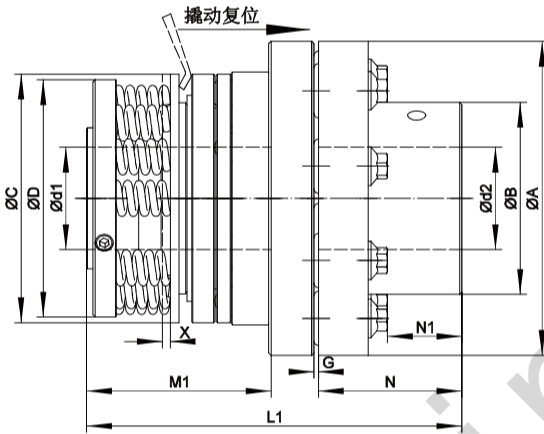
订货描述: 例如 MQL200-L-2-YA50-YA55-1500N. M					
型号	排列形式	模组数量	d1	d2	设定扭矩
MQL200	S	2	YA50	YA55	1500N. M

 咨询米什金获得3D 2D图形 更多安装方式  
Consult Mishkin for more installation ways to get 3D 2D graphics

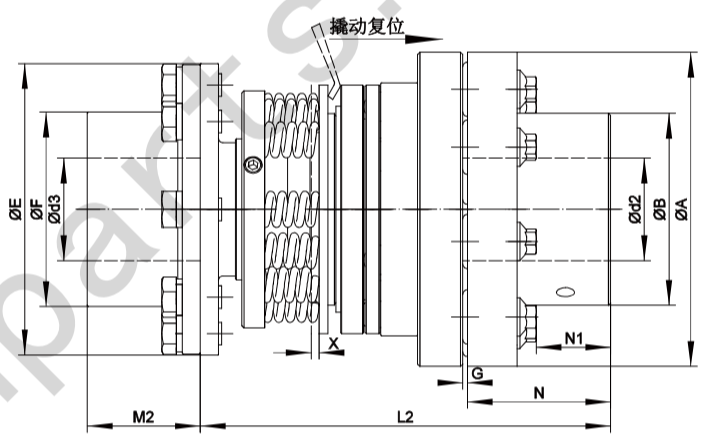


### Functional Features

- Compact size, lightweight design.
- Manual reset and easy disassembly
- No special tools required; virtually maintenance-free
- Available in two models: M type and R type.
- Unless otherwise specified, hole tolerances are machined to H7 standards
- Unless otherwise specified, keyway tolerances are machined to JS9 standards.
- Product weight is based on the standard without holes.
- Rotational inertia is calculated based on the standard without holes



M型



R型

MQ1.0 型键槽式扭矩限制器参数表 Parameter of MQ1.0 Torque Limiter

型号 MQ 1.0	扭矩范围 (N·M)				最大孔径 d1mm	最大孔径 d2mm	最大孔径 d3mm	最高转速 RPM	类型M		类型R		轴向补偿 mm	径向补偿 ±mm	角度补偿 ∠°
	弹簧数量								质量 kg	惯量 kg·m <sup>2</sup>	质量 kg	惯量 kg·m <sup>2</sup>			
	3	6	9	12											
1	40-80	80-160	160-330	240-500	45	65	60	4500	12	0.02	16.1	0.026	2	0.2	1
2	160-320	320-460	640-1200	960-1800	65	105	90	3000	37.2	0.15	50	0.19	2	0.04	1

MQ1.0 型键槽式扭矩限制器主要尺寸 Dimension of MQ1.0 Torque Limiter

型号 MQ 1.0	Φ A	Φ B	类型M				类型R				N	N1	过载信号行程
			Φ C	Φ D	Φ L1	M1	Φ E	Φ F	L2	M2			X
			mm	mm	mm	mm	mm	mm	mm	mm			mm
1	139	85	120	114	166	97	129	86	231.5	51	64	32	3.6-4.7
2	228	174	164	164	227	118	166	123	345	95	64	32	4.9-6.5

订货描述：  
Order form:

订货描述: 例如 MQ1.0-1-M-3-YA40-YA55-75N.M					
型号	类型	弹簧数量	d1	d2	设定扭矩
MQ1.0-1	M	3	YA50	YA55	75N.M